

# Corporate Data / Stock Information

As of March 31, 2020

## Company Name

Yamato Holdings Co., Ltd.

## Head Office

16-10, Ginza 2-chome, Chuo-ku, Tokyo

104-8125 Japan

Telephone: 81-3-3541-4141

Facsimile: 81-3-3543-3361

## Established

November 29, 1919

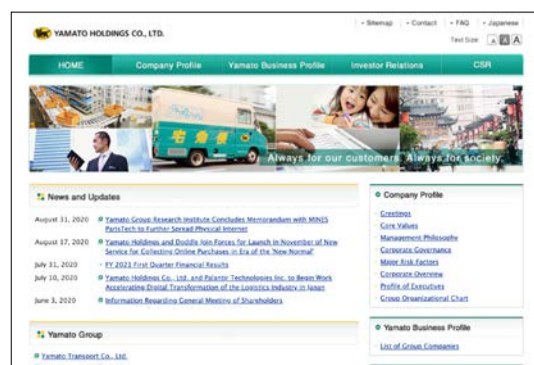
## Registered

April 9, 1929

## Paid-in Capital

127,234,791,077 yen

## Website

<https://www.yamato-hd.co.jp/english/>

## Fiscal Year

From April 1 to March 31

## Common Stock

Authorized: 1,787,541,000 shares

Issued: 411,339,992 shares

## Stock Exchange Listing

Tokyo Stock Exchange

## Transfer Agent and Registrar

Mizuho Trust &amp; Banking Co., Ltd.

## General Meeting of Shareholders

Held in June

## Auditor

Deloitte Touche Tohmatsu LLC

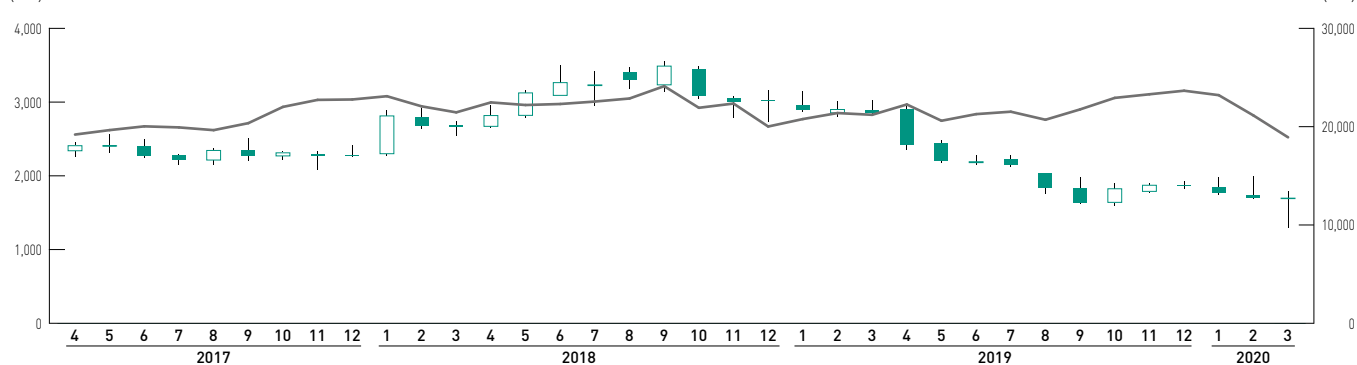
## Principal Shareholders

Percentage of total shares outstanding  
(excluding treasury shares)

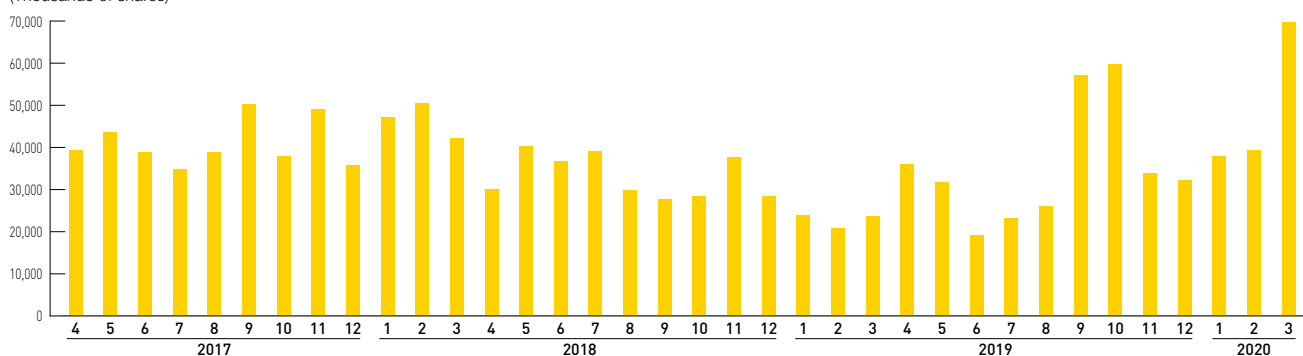
The Master Trust Bank of Japan, Ltd. (Trust Account)	12.15%
Japan Trustee Services Bank, Ltd. (Trust Account)	7.99%
Yamato Employees' Shareholding Association	5.78%
Nippon Life Insurance Company	3.83%
Meiji Yasuda Life Insurance Company	3.72%
UBS AG LONDON A/C IPB SEGREGATED CLIENT ACCOUNT	2.92%
Mizuho Bank, Ltd.	2.66%
Yamato Trading-Partner Shareholding Association	2.19%
Japan Trustee Services Bank, Ltd. (Trust Account 5)	1.76%
JP MORGAN CHASE BANK 385151	1.62%
<b>Total</b>	<b>44.61%</b>

## Stock Price Range / Trading Volume (Tokyo Stock Exchange)

(Yen)



(Thousands of shares)



■ Stock price range (left scale) — Nikkei stock average (right scale) ■ Trading volume (left scale)