

Joint Release
November 22, 2022
Japan Airlines Co., Ltd.
Yamato Holdings Co., Ltd.

JAL and Yamato Holdings Announce Cargo Carrier Aircraft Service to Commence in April 2024

Tokyo, November 22, 2022 - Japan Airlines Co., Ltd. (JAL) and Yamato Holdings Co., Ltd. (YHD) have decided on the routes and number of flights of a dedicated freighter aircraft, which is scheduled to start operating in April 2024, in order to secure stable transportation capacity, maintain and improve service quality, and solve social issues such as regional revitalization. Both companies will continue to work toward the launch of the new service.

1. Routes/Number of Flights

After all three Airbus A321ceo P2F aircraft*are in operation from April 2024, we plan to operate a total of 21 flights per day on the following four routes. This plan is subject to application to and approval by the relevant authorities.

- (1) Tokyo (Narita/Haneda) = Kitakyushu
- (2) Tokyo (Narita/Haneda) = Sapporo (New Chitose)
- (3) Tokyo (Narita) – Okinawa (Naha)
- (4) Okinawa (Naha) – Kitakyushu

*Note: Maximum Payload: 28t/aircraft (equivalent to 5-6 10-ton vehicles)

Loading Containers: AAY containers(Main Deck): 14 units AKH containers (Lower Deck): 10 units.

2. Aircraft Delivery, and refurbishment of aircraft, etc.

(1) Delivery

Two of the three aircraft have been delivered and the remaining one is scheduled to be received in February 2023.

(2) Refurbishment of aircraft

Conversion of the aircraft from a passenger aircraft to a dedicated freighter aircraft will begin sequentially in Singapore from March 2023. The conversion program to a dedicated freighter aircraft has been contracted with EFW of Germany*.

*EFW was jointly established by AIRBUS, an aircraft manufacturer, and ST Engineering of Singapore, a company specializing in the conversion of Airbus aircraft

from passenger to freighters.

(3) Operating Company

The operating company will be changed to Spring Japan Co., Ltd. a JAL consolidated subsidiary.

In light of the external environment, the JAL Group will optimize the allocation of management resources, strengthen the business foundation of its LCCs, and accelerate Group-wide preparations for the start of dedicated freighter flights in April 2024.

(4) Others

a. Facilities and aircraft

At each of the airports where freighters are scheduled to operate, we are installing the necessary aircraft and improving the facilities required for the launch of freighters.

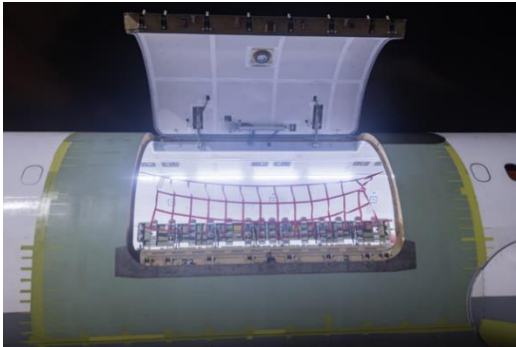
b. Recruitment

Both companies will hire new personnel, including those who will be involved in flight operations and freight handling, in preparation for the launch of the new aircraft in 2024.

Reference Images

Airbus 321-200P2F: Image of the modified fuselage

(1) Main deck cargo door



(2) Main deck interior



(3) Storage view of the received aircraft, and image of the aircraft design



*Actual aircraft may differ from image.

Contact

General Contact:

Yamato Transport Co., Ltd. call center TEL: 0120-01-9625

Press Contact:

Public Relations, Japan Airlines Co., Ltd. :mediarelations.hdq@jal.com

Corporate Communications, Yamato Holdings Co., Ltd. TEL: 03-3541-4141

Reference:

January 21, 2022 press release entitled “Introducing Air Freighters to Sustain the Logistic Network in April 2024”

https://www.yamato-hd.co.jp/news/attachment/newsrelease20220124_en02.pdf