



NEWS RELEASE

November 21, 2025

Yamato Transport Co., Ltd.

Ishikawa Suzu Sales Office to Relaunch Full-Scale Operations on November 25 as Yamato Transport's First Sustainable Logistics Infrastructure Base in the Noto Region of Ishikawa Prefecture

Supporting livelihoods and industry in the Noto region by strengthening the TA-Q-BIN network through enhanced business continuity planning

Yamato Transport Co., Ltd. (Headquarters: Chuo-ku, Tokyo; Representative Director and President: Seiichi Awa) hereby announces that it will relaunch operations in earnest at the Ishikawa Suzu Sales Office on Tuesday, November 25, 2025. This sales office had been damaged by the 2024 Noto Peninsula Earthquake, which struck on New Year's Day, and had been relocated to temporary facilities thereafter.



The Noto Peninsula Earthquake caused extensive damage in the Noto region of Ishikawa Prefecture, and Yamato Transport's four TA-Q-BIN offices (Ishikawa Suzu Office, Ishikawa Wajima Office, Ishikawa Anamizu Office, and Ishikawa Nanao Office) were affected. Immediately after the disaster, we quickly resumed operations through establishing temporary storefronts and emergency measures, and have been making efforts to ensure packages are collected and delivered, and that relief supplies are provided to the affected area.

The Noto region is prone to disasters such as earthquakes and torrential rains, and since the Noto

Peninsula Earthquake, the region's population has been declining at an accelerating rate. Still, the region offers a great deal of attractions, including richly beautiful nature symbolized by Japan's first World Agricultural Heritage Site, Noto's Satoyama and Satoumi, as well as fresh seafood, Noto beef and other foods, and traditional crafts and culture represented by *Wajima-nuri* (lacquerware from the Wajima area).

We will continue to strengthen the TA-Q-BIN network as part of social infrastructure supporting the lives of everyone in the Noto region and contribute to the region's revitalization. We will also work with local businesses and municipalities to add to our value proposition.

■ Ishikawa Suzu Sales Office Features

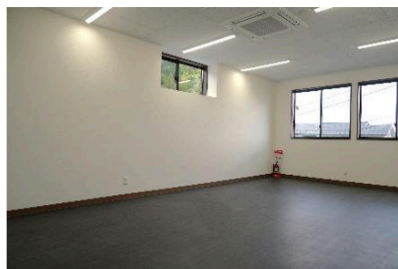
Owing to its location at the tip of the Noto Peninsula, the Ishikawa Suzu Office has limited access to other cities and was cut off from roads and lifelines during the Noto Peninsula Earthquake, forcing a temporary suspension of services. The new sales office has taken business continuity planning (BCP) measures based on the lessons learned at the time of the disaster. Now, it is a sustainable facility that is resistant to natural disasters and environmentally friendly with the introduction of electric vehicles (EVs) and solar panels.

- Power outage countermeasures: Installing solar panels, storage batteries, and a vehicle to home (V2H) system for supplying power from EVs to buildings
- Water outage countermeasures: Installing a water receiving tank and rainwater utilization system (to be installed in 2026)
- Support for stranded persons: Installing overnight stay rooms and shower rooms and stocking disaster supplies

Steel frame on par with disaster prevention centers, such as those built for police, fire departments, etc.



Overnight stay rooms, shower rooms, disaster supply stockrooms



V2H system



Water receiving tank and rainwater utilization system *To be installed in 2026



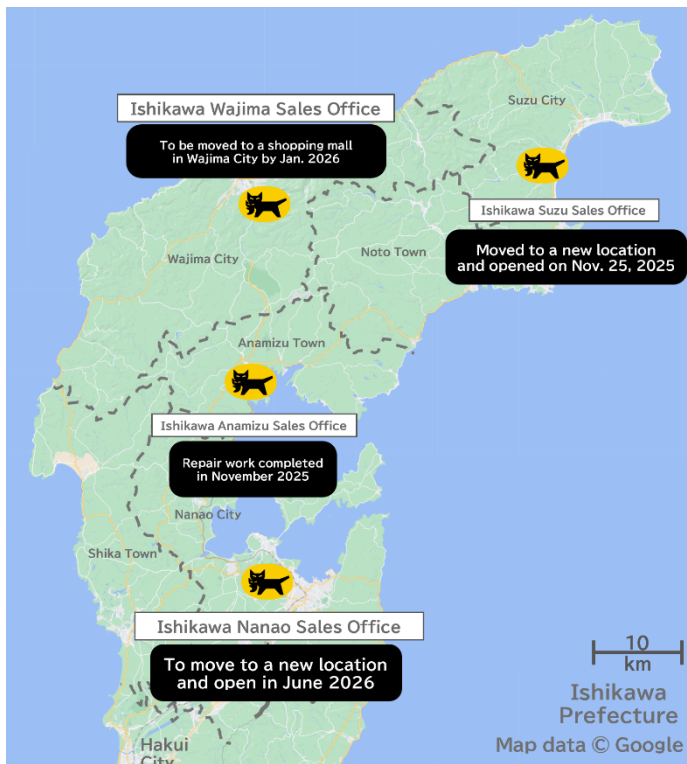
Solar panels and storage batteries



EVs



■ About Yamato Transport's Logistics Infrastructure Bases in the Noto Region



■ Event Commemorating the Opening of Ishikawa Suzu Office for Local Residents

Date: Saturday, November 22, 2025, 11:00 a.m. to 3:00 p.m.

Address: 2-1 Kashihara-Harasaru, Horyumachi, Suzu City, Ishikawa Prefecture

Opening Ceremony

- Greeting by the organizer (Osamu Yamanaka, Executive Officer, Yamato Transport Co., Ltd.)
- Greeting by the guest of honor (Ishikawa Prefecture of Fisheries Co-operative Associations)
- Ribbon cutting

Open Participation Program

- Work experience for children (wearing uniforms designed for children)
- Truck (EV/large 10-ton) exhibition and ride-along experience
- Sales office tour
- Demonstration of loading and unloading cargo using a pallet lifter
- Commemorative photo with the Kuroneko and Shironeko characters
- Display of messages of support for recovery from all over Japan
- Presenting free squid (frozen), a local specialty, to the event's first 50 visitors
- Presenting novelty gifts for all visiting children of elementary school age and younger

Contact

General inquiries:

Service Center, Yamato Transport Co., Ltd.

TEL: 0120-01-9625 (from landlines; toll-free call, from inside Japan only), 0570-200-000 (from cellular phones; toll call, from inside Japan only)

URL : <https://www.kuronekoyamato.co.jp/yt/contact/#anc-01>

Press inquiries:

Corporate Communications, Yamato Transport Co., Ltd.

TEL: +81-3-3541-3411