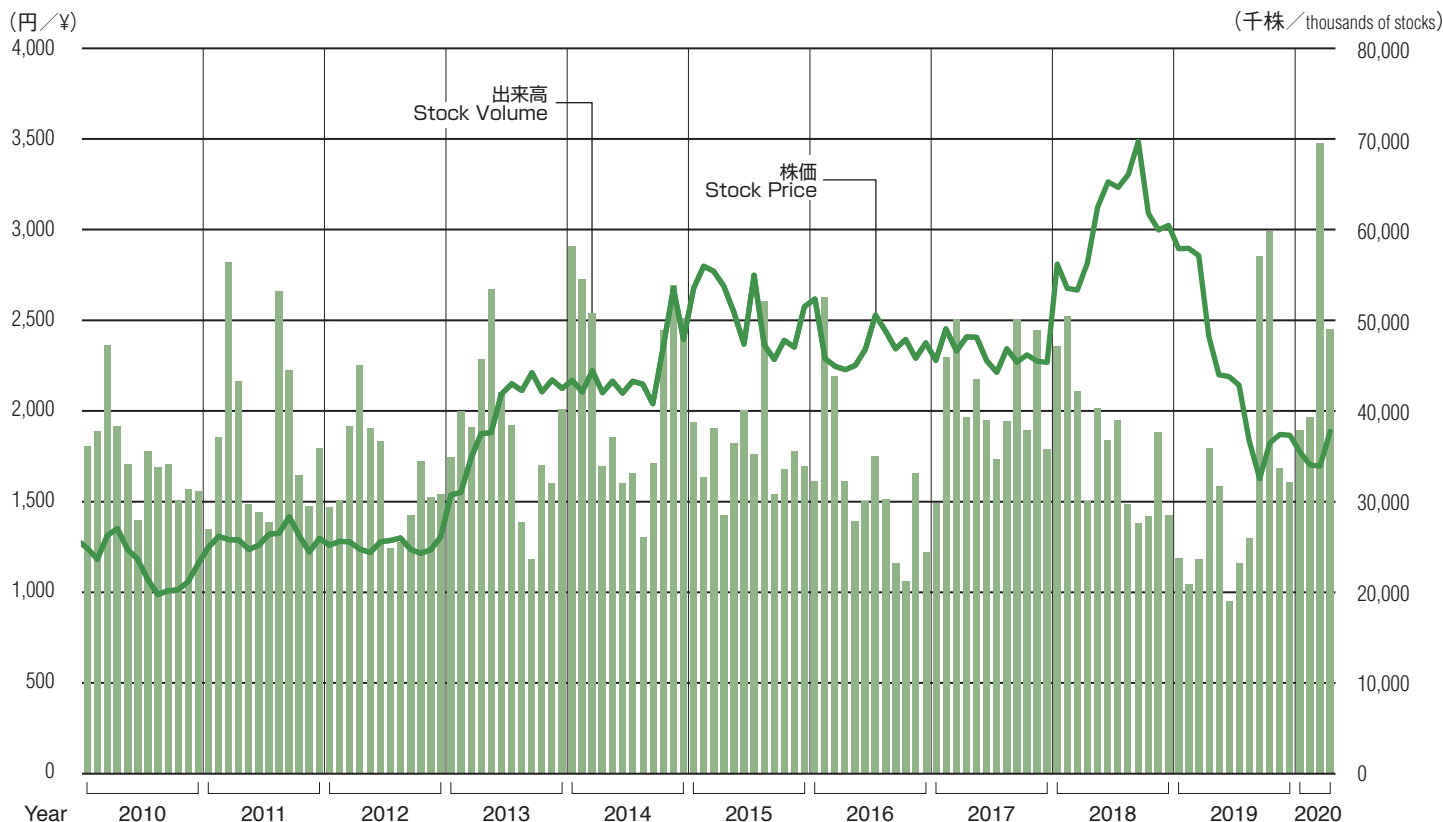
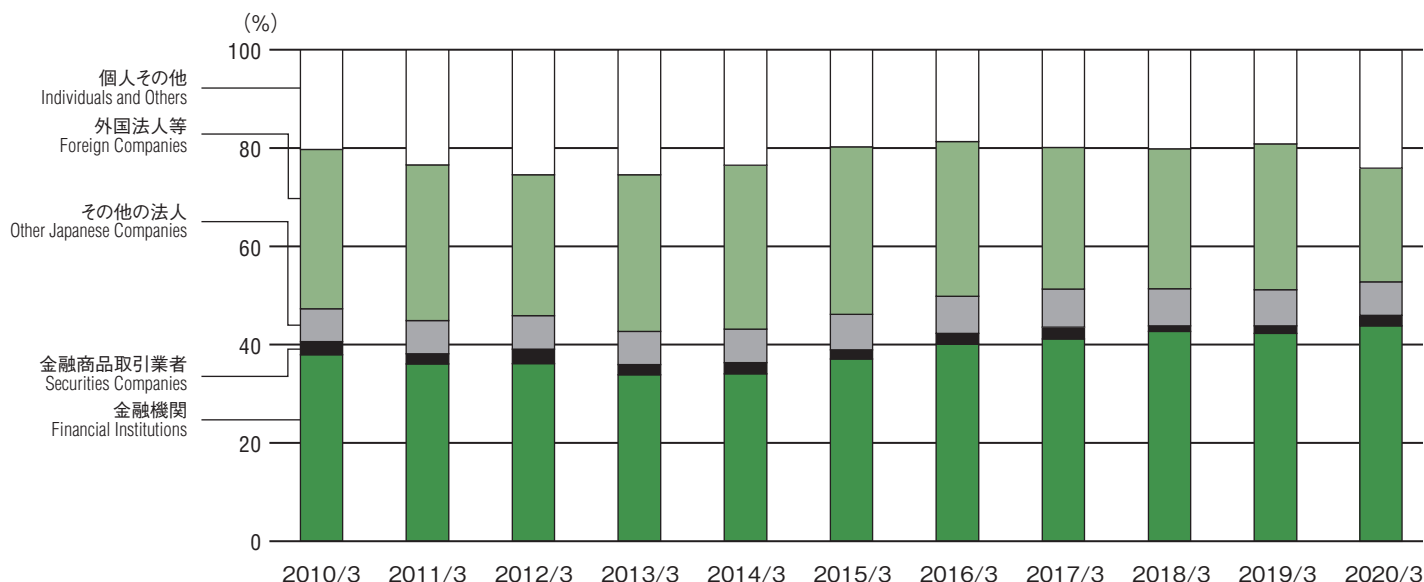


## 株価・出来高 Stock Price and Stock Volume



## 所有者別議決権比率 Stock Breakdown by Percentage of Total Shares



	2010/3	2011/3	2012/3	2013/3	2014/3	2015/3	2016/3	2017/3	2018/3	2019/3	2020/3
金融機関 (%) Financial Institutions (%)	37.97	36.06	36.13	33.89	34.04	37.10	40.09	41.19	42.67	42.30	43.81
金融商品取引業者 (%) Securities Companies (%)	2.62	2.08	2.97	2.04	2.32	1.88	2.18	2.36	1.14	1.55	2.15
その他の法人 (%) Other Japanese Companies (%)	6.72	6.77	6.82	6.77	6.83	7.21	7.60	7.75	7.58	7.35	6.82
外国法人等 (%) Foreign Companies (%)	32.45	31.67	28.66	31.88	33.34	34.09	31.45	28.86	28.45	29.66	23.15
個人その他 (%) Individuals and Others (%)	20.24	23.42	25.42	25.42	23.47	19.72	18.68	19.84	20.17	19.14	24.07

