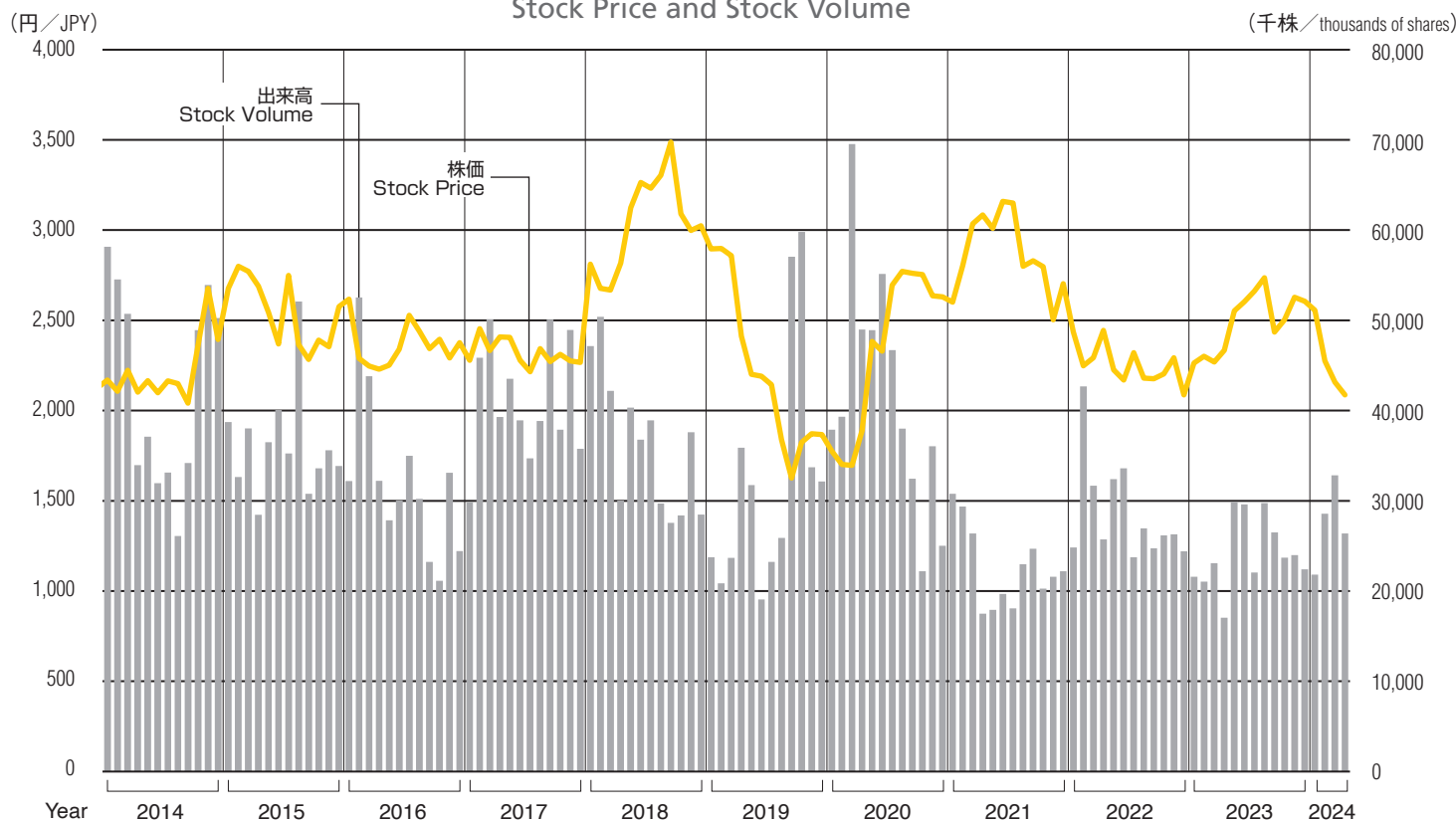


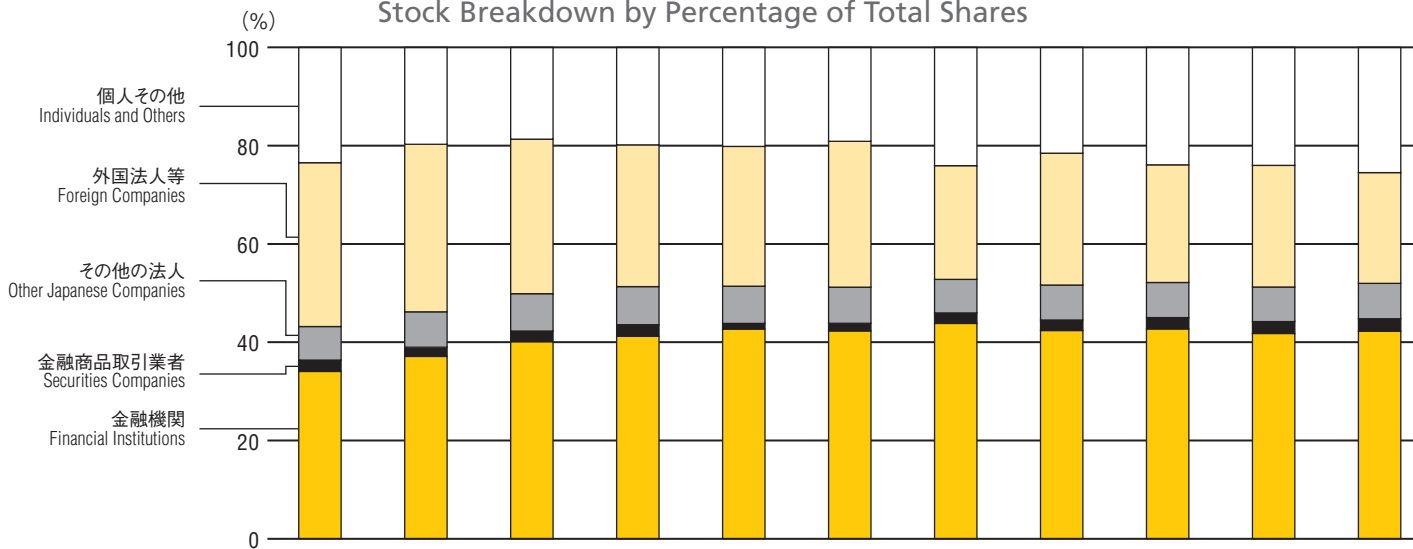
株価・出来高

Stock Price and Stock Volume



所有者別議決権比率

Stock Breakdown by Percentage of Total Shares



| (%) | 2014/3 | 2015/3 | 2016/3 | 2017/3 | 2018/3 | 2019/3 | 2020/3 | 2021/3 | 2022/3 | 2023/3 | 2024/3 |
|------------------------------------|--------|--------|--------|--------|--------|--------|--------|--------|--------|--------|--------|
| 金融機関 Financial Institutions | 34.04 | 37.10 | 40.09 | 41.19 | 42.67 | 42.30 | 43.81 | 42.38 | 42.69 | 41.76 | 42.24 |
| 金融商品取引業者 Securities Companies | 2.32 | 1.88 | 2.18 | 2.36 | 1.14 | 1.55 | 2.15 | 2.12 | 2.32 | 2.42 | 2.54 |
| その他の法人 Other Japanese Companies | 6.83 | 7.21 | 7.60 | 7.75 | 7.58 | 7.35 | 6.82 | 7.11 | 7.13 | 7.04 | 7.20 |
| 外国法人等 Foreign Companies | 33.34 | 34.09 | 31.45 | 28.86 | 28.45 | 29.66 | 23.15 | 26.85 | 23.97 | 24.75 | 22.53 |
| 個人その他 Individuals and Others | 23.47 | 19.72 | 18.68 | 19.84 | 20.17 | 19.14 | 24.07 | 21.54 | 23.88 | 24.03 | 25.49 |